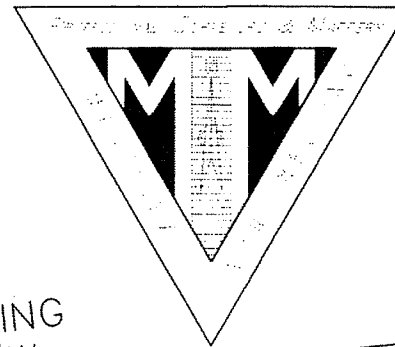


GLADES ROAD SELF STORAGE, MUPD

A REPLAT OF A PORTION OF TRACT 36 BLOCK 76, THE PALM BEACH FARMS CO. PLAT NO. 3, ACCORDING TO THE PLAT THEREOF, AS RECORDED IN PLAT BOOK 2, PAGES 45 THROUGH 54, INCLUSIVE, OF THE PUBLIC RECORDS OF PALM BEACH COUNTY, FLORIDA, LYING WEST OF THAT PORTION OF TRACT 36 CONVEYED TO THE FLORIDA STATE TURNPIKE AUTHORITY BY ORDER OF TAKING RECORDED IN THE MINUTES CIRCUIT COURT BOOK 68, AT PAGE 209 AND BY THE RESULTS OF THE EMINENT DOMAIN PROCEEDINGS REFERENCED IN THAT NOTICE OF LIS PENDENS RECORDED IN OFFICIAL RECORDS BOOK 544, AT PAGE 293, ALL IN SECTION 17, TOWNSHIP 47 SOUTH, RANGE 42 EAST OF THE PUBLIC RECORDS OF PALM BEACH COUNTY, FLORIDA.

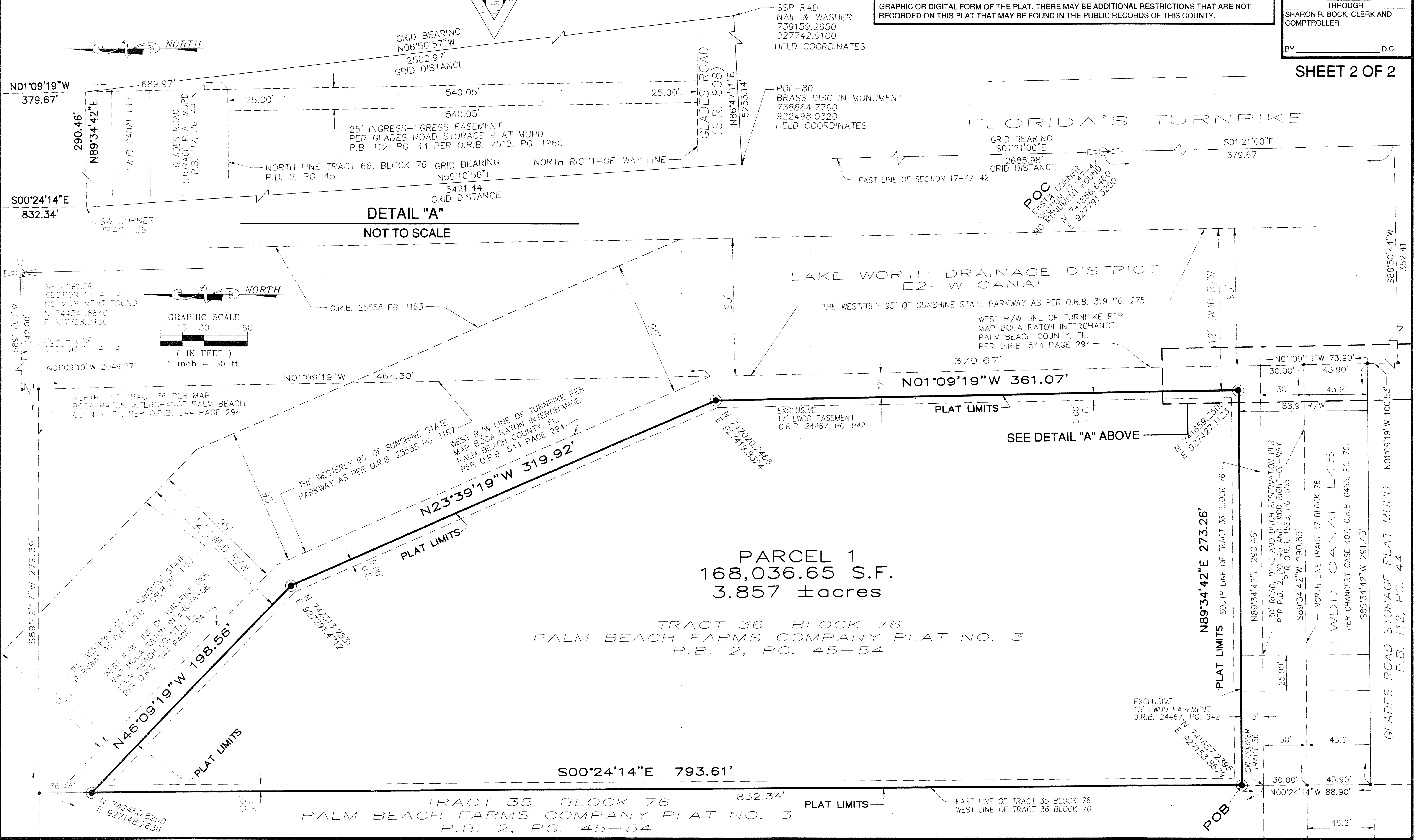
MARTINEZ & MARTINEZ ENTERPRISES, INC.



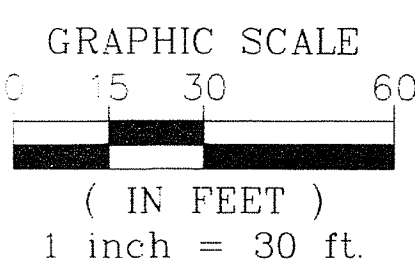
7179 WEST 13TH AVENUE, HIALEAH, FLORIDA 33014
PHONE: (786) 277-4851, PLSPSM@GMAIL.COM
BUSINESS LICENSE #7702

NOTICE:
THIS PLAT, AS RECORDED IN ITS GRAPHIC FORM, IS THE OFFICIAL DEPICTION OF THE SUBDIVIDED LANDS DESCRIBED HEREIN AND WILL IN NO CIRCUMSTANCES BE SUPPLEMENTED IN AUTHORITY BY ANY OTHER GRAPHIC OR DIGITAL FORM OF THE PLAT. THERE MAY BE ADDITIONAL RESTRICTIONS THAT ARE NOT RECORDED ON THIS PLAT THAT MAY BE FOUND IN THE PUBLIC RECORDS OF THIS COUNTY.

STATE OF FLORIDA COUNTY OF PALM BEACH
THIS PLAT WAS FILED FOR RECORD AT THIS DAY OF 2015, AND DULY RECORDED IN PLAT BOOK THROUGH ON PAGES THROUGH SHARON R. BOCK, CLERK AND COMPTROLLER



DETAIL "A"
NOT TO SCALE



PARCEL 1
168,036.65 S.F.
3.857 ± acres

TRACT 36 BLOCK 76
PALM BEACH FARMS COMPANY PLAT NO. 3
P.B. 2, PG. 45-54

TRACT 35 BLOCK 76
PALM BEACH FARMS COMPANY PLAT NO. 3
P.B. 2, PG. 45-54